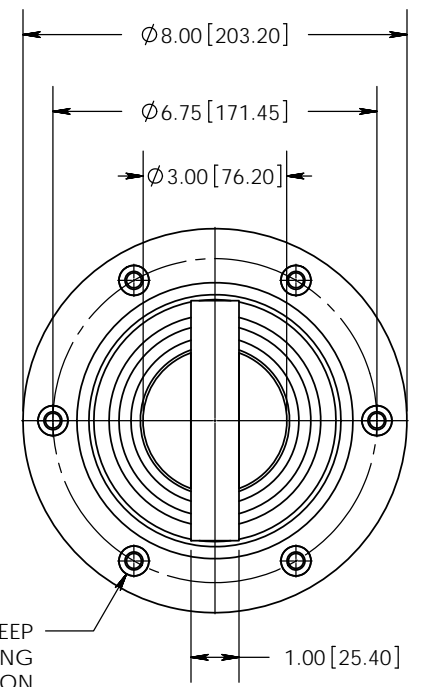
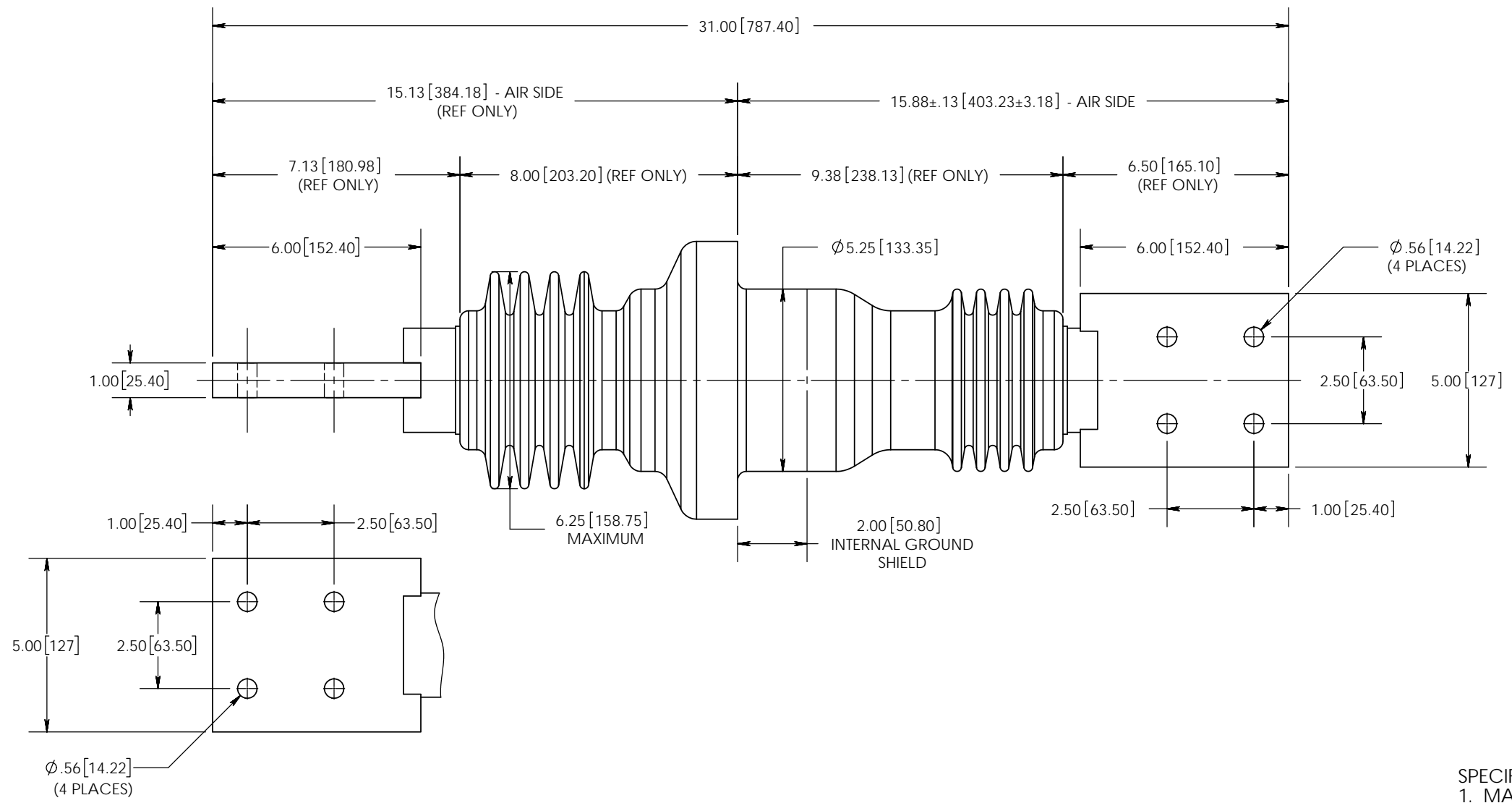
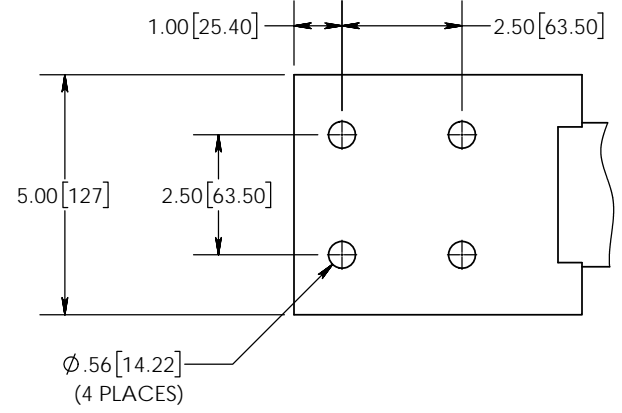


REVISIONS					
REV.	DATE	ECN#	DESCRIPTION	BY	APPROVED



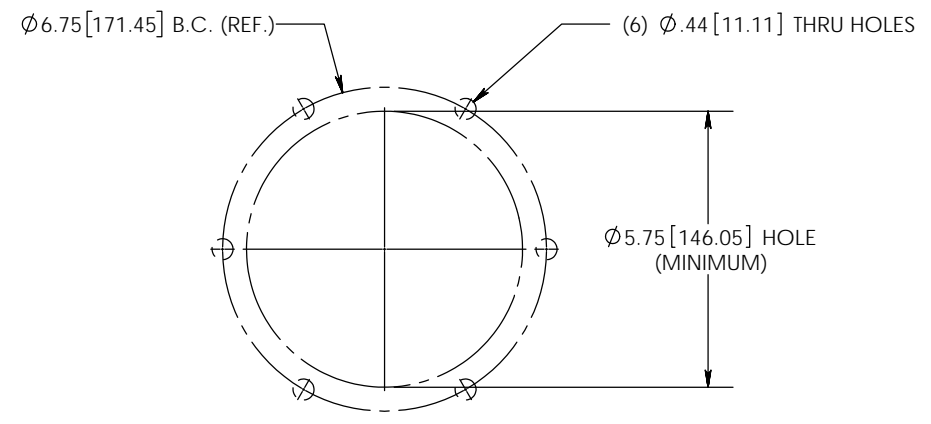
3/8"-16 UNC X .63" [15.88] DEEP
STEEL-ZINC PLATED MOUNTING
INSERTS (6 PLACES) COMMON
WITH STRESS SHIELD



NOTES:
1. ALL CONTACT SURFACES TO BE CLEAN & FREE FROM FLASH.

MATERIAL:
1. CYCLOALIPHATIC EPOXY (U.V. EXPOSED), COLOR: GREY
2. HD ETP COPPER C11000, TIN PLATED CONDUCTOR.

- SPECIFICATIONS:**
1. MANUFACTURED IN ACCORDANCE WITH IEEE C57.19.01-2000
 2. RATED VOLTAGE 13.8kV
 3. POWER FREQUENCY WITHSTAND 50kV
 4. BASIC IMPULSE LEVEL 110kV
 5. NOMINAL CURRENT RATING 4000 AMPS
 6. TEMPERATURE CLASSIFICATION..... -50°C TO +105°C
 7. APPROXIMATE WEIGHT 81 LBS



PROPRIETARY AND CONFIDENTIAL

THE INFORMATION CONTAINED IN THIS DRAWING IS THE SOLE PROPERTY OF H-J INTERNATIONAL, INC. ANY REPRODUCTION IN PART OR AS A WHOLE WITHOUT THE WRITTEN PERMISSION OF H-J INTERNATIONAL, INC. IS STRICTLY PROHIBITED.

TOLERANCES (EXCEPT AS NOTED)

ONE PLACE MM ±1.50
TWO PLACE MM ±0.75
TWO PLACE DEC. ±.060
THREE PLACE DEC. ±.030
FRACTIONS ± 1/16"
ANGLES 2°

BREAK ALL SHARPS UNLESS OTHERWISE NOTED



H-J INTERNATIONAL, INC.
3010 HIGH RIDGE BLVD, HIGH RIDGE, MO. 63049 USA
PHONE 1-636-677-3421 FAX 1-636-376-1915

POWER APPARATUS BUSHING
15kV / 4000A

APPROVED BY	NJS	DATE	03/09/2015
CHECKED BY	NJS	DATE	03/09/2015
DRAWN BY	CLS	DATE	03/09/2015
TOOL NO.	T20-200-7		
PRODUCT GRP.	2000 SERIES		

DRAWING NO.	20-200-705								
SCALE	1:4	SIZE	B	REV.	0	SHEET	1	OF	1